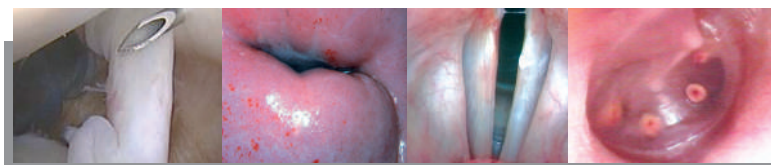


# CCD CAMERA FOR ENDOSCOPY

## OP-714

SUPERIOR IMAGE QUALITY

- High performance
- Digital image control
- High resolution



producing quality

The OPTOMIC OP-714 camera for endoscopy is widely used in medical applications for both diagnosis and surgery, where superior image quality is essential. Thanks to its DSP technology based processor, the camera offers high performance and a precise adjustment of the different parameters on which the specialist can rely.

## CCD CAMERA FOR ENDOSCOPY **OP-714**

OP-714

The user-friendly interface of the OP-714 camera makes it very easy to operate. The device is fully automatic featuring an Automatic Light Control system (ALC) that ensures optimum images with enhanced color reproduction.

It is equipped with a standard C-mount coupler for quick connection of endoscopes.

The light and ergonomic camera head incorporates two convenient push buttons for white balance and freeze function.



|  |  |
|--|--|
| Digital Signal Processor (DSP)             | √  |
| Image sensor                               | 1 CCD 1/3"   |
| Non-conductive and water proof camera head | √ (IPX7 Protection grade)                                |
| Cable length                               | 3 meters   |
| High resolution                            | 600 TV lines   |
| ADC  | 12 bit   |
| High sensibility                           | 3 lux min  |
| Video outputs                              | 2 x Composite video<br>1 x Y/C (S-Video)<br>1 x RGB/SYNC |
| Shutter speed                              | up to 1/10.000 seg.                                      |
| Automatic white balance system             | √  |
| Electronic light control (ELC)             | √  |
| Window function                            | √  |
| Back light compensation system             | √  |
| Endoscopic adaptor                         | f=18mm   |
| Optional endoscopic adaptor                | zoom 16-32mm   |
| Camera head                                | 2 buttons (White balance and Freeze)                     |
| TV systems                                 | PAL  |
| Mains voltages                             | 100-240VAC, 50-60Hz                                      |
| Weight                                     | 4.500 gr.  |
| Dimensions: length x width x height        | 29cm x 32cm x 7cm  |
| Power consumption                          | 35VA   |



### OPTOMIC ESPAÑA S.A.

Madroño 4. E-28770, Colmenar Viejo. Madrid - Spain  
Tel: +34 91 804 44 44  
export@optomic.com  
www.optomic.com



producing quality

Specifications are subject to change without notice